

**Burr Oak Area  
Storm Sewer Improvement  
Project Map**

This map is for general information purposes only. Although the information is believed to be generally accurate, errors may exist and the user should independently confirm for accuracy. The map does not constitute a regulatory determination and is not a base for engineering design. A Registered Land Surveyor should be consulted to determine precise location boundaries on the ground.



Detour



Phase 1



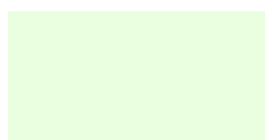
Phase 2



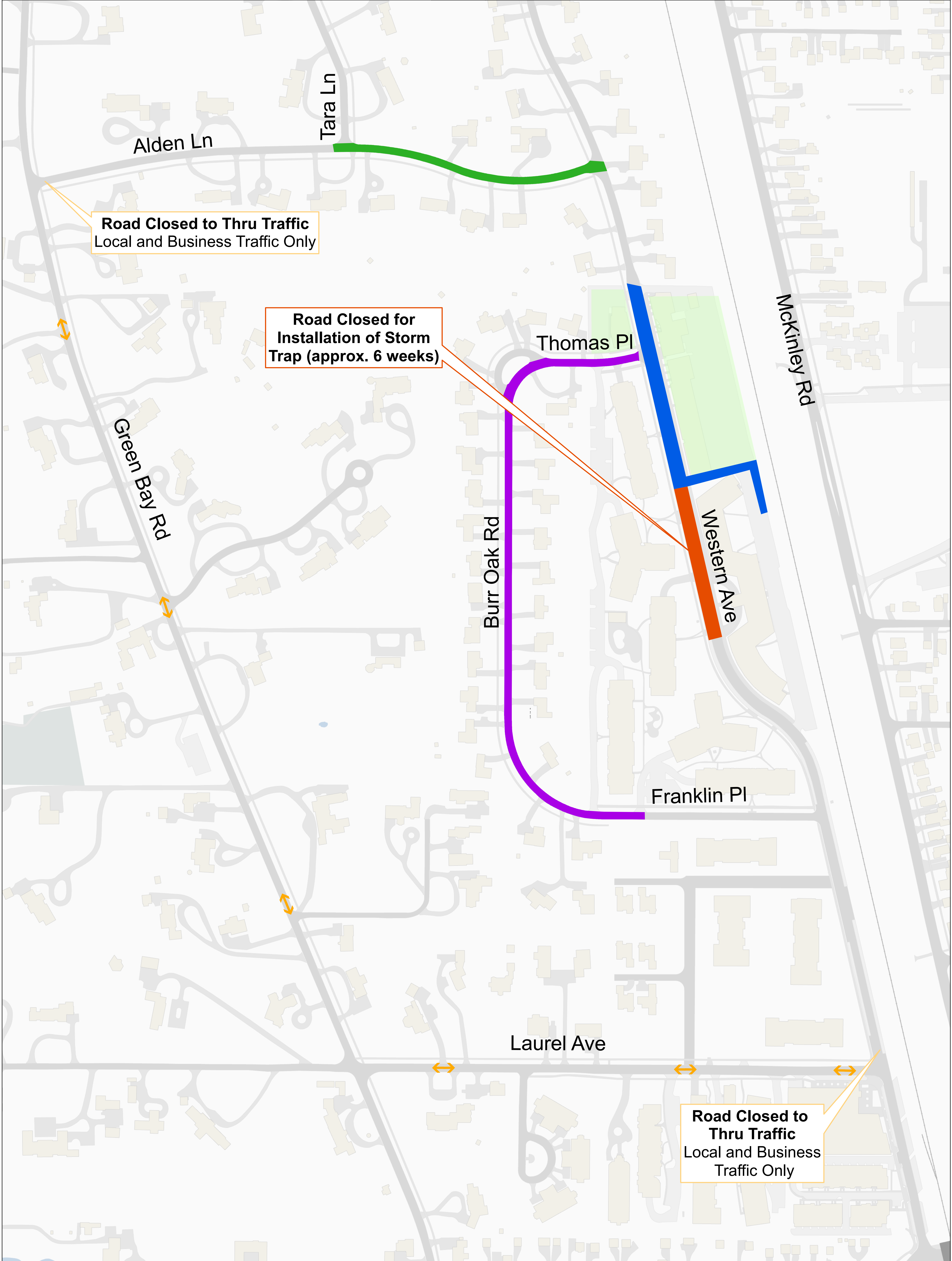
Phase 3



Phase 4



Open Businesses





# Burr Oak Area Storm Sewer Improvement Project

## Detour

This map is for general information purposes only. Although the information is believed to be generally accurate, errors may exist and the user should independently confirm for accuracy. The map does not constitute a regulatory determination and is not a base for engineering design. A Registered Land Surveyor should be consulted to determine precise location boundaries on the ground.



Detour



Open Businesses



Local and Business Traffic Only





Burr Oak Area Storm Sewer  
Improvement Project  
Phase 1 Detour

This map is for general information purposes only. Although the information is believed to be generally accurate, errors may exist and the user should independently confirm for accuracy. The map does not constitute a regulatory determination and is not a base for engineering design. A Registered Land Surveyor should be consulted to determine precise location boundaries on the ground.



Detour



Phase 1



Open Businesses



Local and Business Traffic Only

Alden Ln

Tara Ln

Road Closed to Thru Traffic  
Local and Business Traffic Only

Installation of new,  
increased capacity,  
storm sewer

Thomas Pl

McKinley Rd

Green Bay Rd

Burr Oak Rd

Western Ave

Franklin Pl

Laurel Ave

Road Closed to  
Thru Traffic  
Local and Business  
Traffic Only



Burr Oak Area Storm Sewer Improvement Project  
Phase 2 Detour

This map is for general information purposes only. Although the information is believed to be generally accurate, errors may exist and the user should independently confirm for accuracy. The map does not constitute a regulatory determination and is not a base for engineering design. A Registered Land Surveyor should be consulted to determine precise location boundaries on the ground.



Detour



Phase 2



Open Businesses



Local and Business Traffic Only

Alden Ln

Tara Ln

Road Closed to Thru Traffic  
Local and Business Traffic Only

Green Bay Rd

Installation of new,  
increased capacity,  
storm sewer

Thomas Pl

Burr Oak Rd

McKinley Rd

Western Ave

Franklin Pl

Laurel Ave

Road Closed to  
Thru Traffic  
Local and Business  
Traffic Only



Burr Oak Area Storm Sewer Improvement Project  
Phase 3 Detour

This map is for general information purposes only. Although the information is believed to be generally accurate, errors may exist and the user should independently confirm for accuracy. The map does not constitute a regulatory determination and is not a base for engineering design. A Registered Land Surveyor should be consulted to determine precise location boundaries on the ground.



Detour



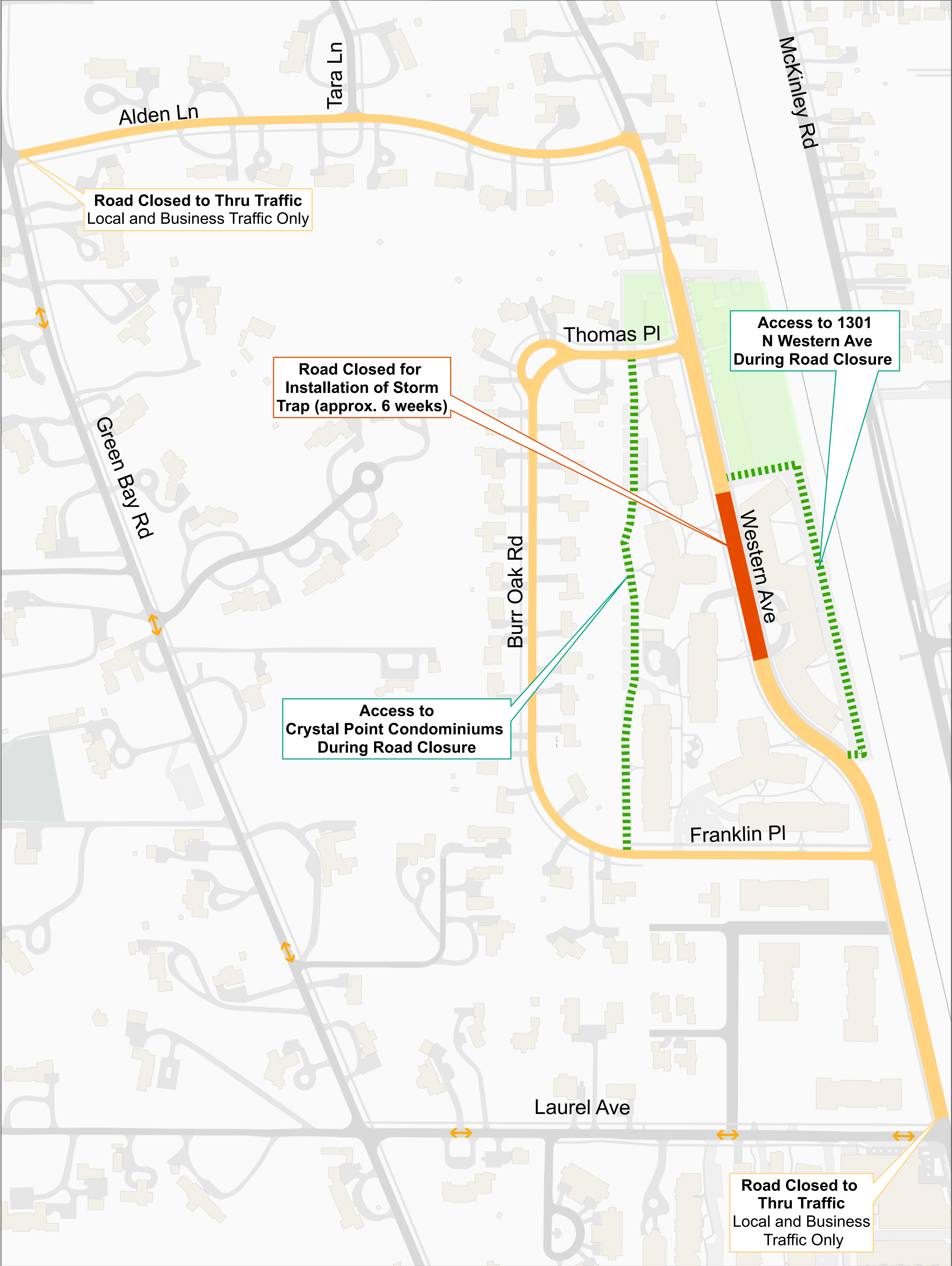
Phase 3



Open Businesses



Local and Business Traffic Only





Burr Oak Area Storm Sewer Improvement Project  
Phase 4 Detour

This map is for general information purposes only. Although the information is believed to be generally accurate, errors may exist and the user should independently confirm for accuracy. The map does not constitute a regulatory determination and is not a base for engineering design. A Registered Land Surveyor should be consulted to determine precise location boundaries on the ground.



Detour



Phase 4



Open Businesses



Local and Business Traffic Only

Alden Ln

Tara Ln

Road Closed to Thru Traffic  
Local and Business Traffic Only

Installation of new,  
increased capacity,  
storm sewer

Thomas Pl

McKinley Rd

Green Bay Rd

Burr Oak Rd

Western Ave

Franklin Pl

Laurel Ave

Road Closed to  
Thru Traffic  
Local and Business  
Traffic Only